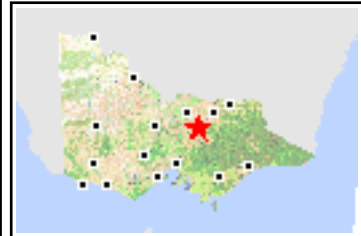
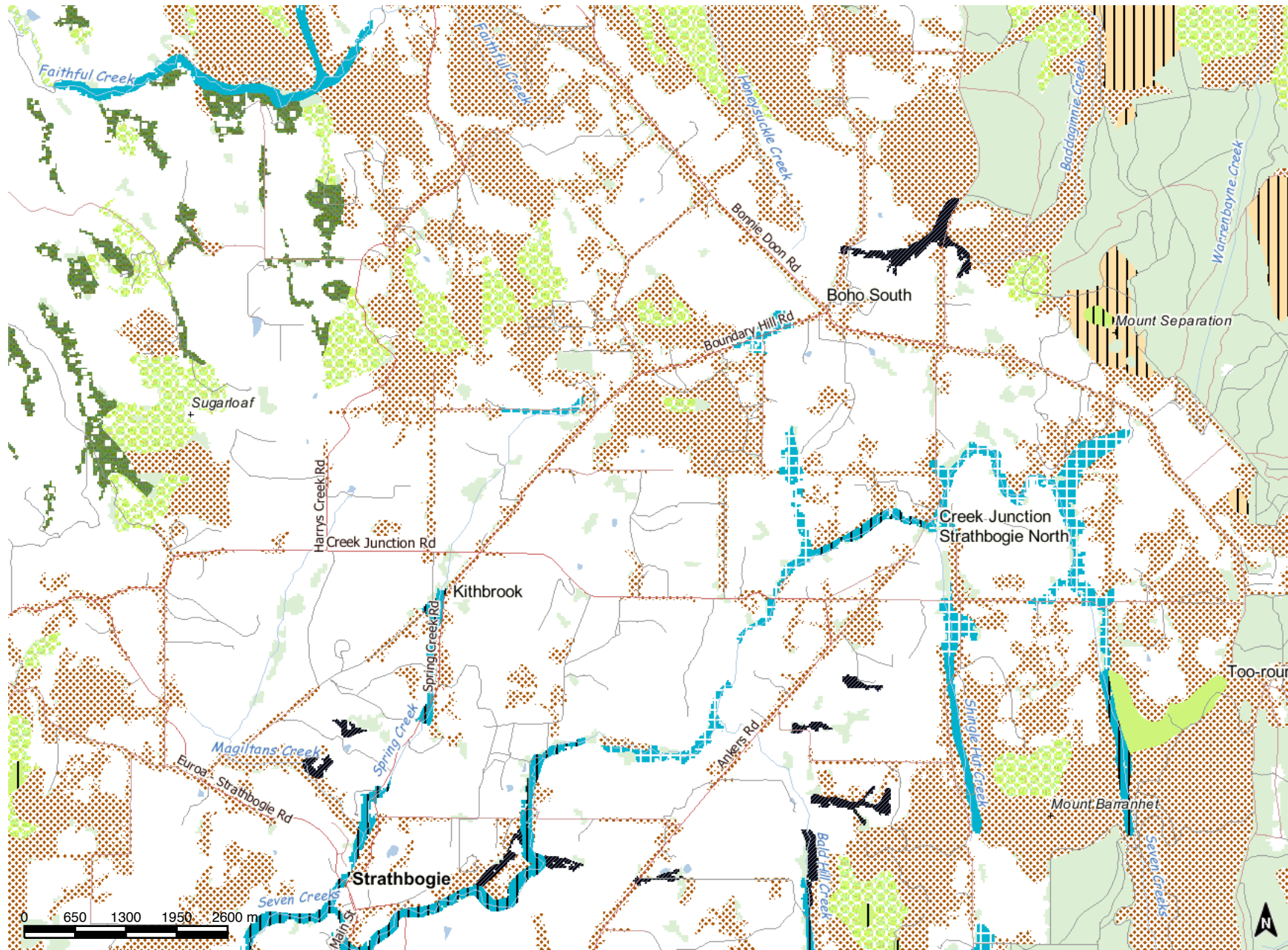


# EVCs northern Tableland



<p><b>ROADS</b></p> <ul style="list-style-type: none"> <li> Freeway</li> <li> Highway</li> <li> Main Road</li> <li> Secondary Road</li> <li> Local Road</li> <li> 2WD (Unsealed)</li> </ul> <p><b>WATERCOURSES</b></p> <ul style="list-style-type: none"> <li> Major Watercourse</li> <li> Minor Watercourse</li> </ul> <p><b>ECOLOGICAL VEGETATION CLASSES</b></p> <ul style="list-style-type: none"> <li> 29 Damp Forest</li> <li> 73 Rocky Outcrop Shrubland/Rocky Outcrop Hermland Mosaic</li> <li> 68 Creepline Grassy Woodland</li> <li> 22 Grassy Dry Forest</li> <li> 174 Grassy Dry Forest/Rocky Outcrop Shrubland/Rocky Outcrop Hermland Mosaic</li> <li> 18 Riparian Forest</li> <li> 83 Swampy Riparian Woodland</li> <li> 212 Swampy Riparian Woodland/Perched Boggy Shrubland Mosaic</li> <li> 185 Perched Boggy Shrubland</li> <li> 20 Heathy Dry Forest</li> <li> 23 Herb-rich Foothill Forest</li> <li> 47 Valley Grassy Forest</li> </ul>	<p><b>WATERBODIES</b></p> <ul style="list-style-type: none"> <li> Watercourse Area</li> <li> Permanent Waterbody</li> <li> Wetland Area</li> </ul> <p><b>BUILT UP AREAS</b></p> <ul style="list-style-type: none"> <li> TREE COVER</li> </ul>
---	---

Disclaimer: This map is a snapshot generated from Victorian Government data. This material may be of assistance to you but the State of Victoria does not guarantee that the publication is without flaw of any kind or is wholly appropriate for your particular purposes and therefore disclaims all liability for error, loss or damage which may arise from reliance upon it. All persons accessing this information should make appropriate enquiries to assess the currency of the data.